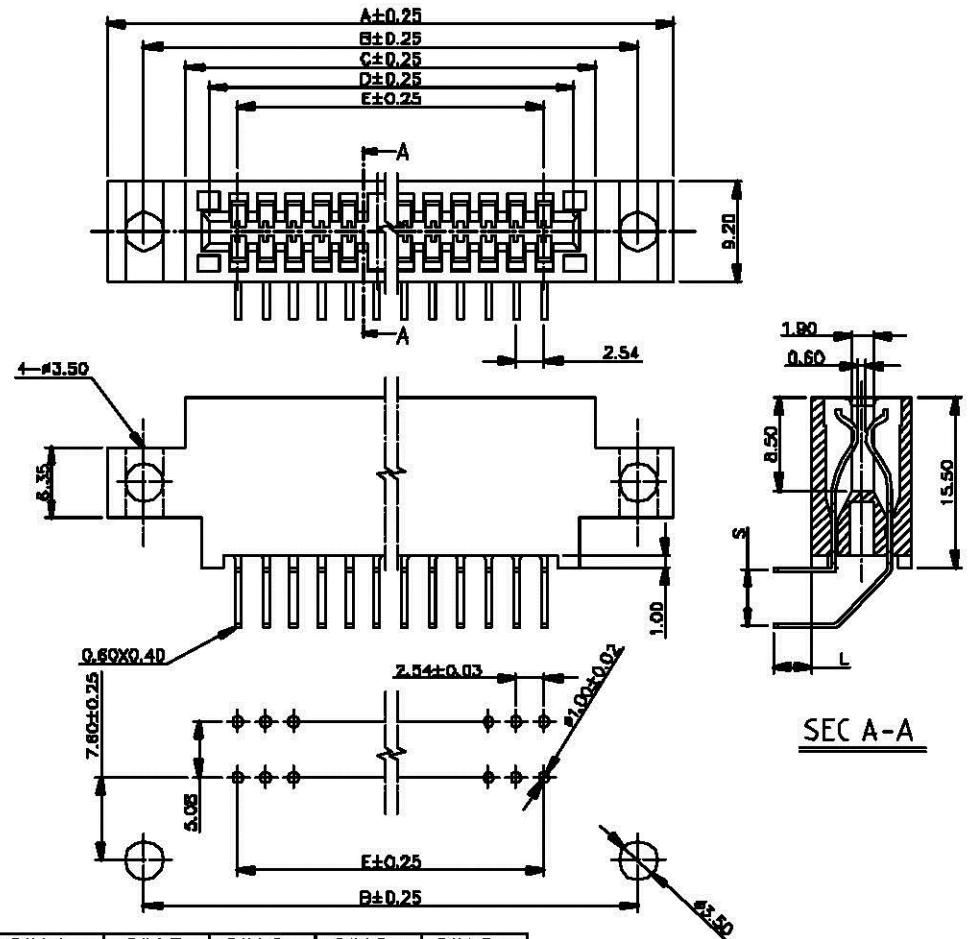


REV.	ECN NO.	ADDP.
H	0504018	Joseph Chou 8/17/2014



**FEATURE:**

INSULATOR  
Glass-Filled P.B.T. is 94V-0 rated  
CONTACT  
Phosphor Bronze selective gold plating  
over nickel

**SPECIFICATION:**

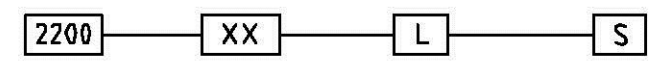
Current Rating : 3 amperes  
Contact Resistance : 20 miniohms max.  
Operation Temperature : -55° c to +105° c  
Voltage Rating : 800 VAC 1 minute  
Insulation Resistance : 5000 megohms min.  
Insertion Force : 412 grams max. per pair  
Withdrawal Force : 32 grams min. per pair

**NOTE:**

ORDERING INFORMATION

ex

SERIES NO. CONTACTS NO. TAIL LENGTH. ROW TO ROW DIN.



CONTACT NO	DIM A	DIM B	DIM C	DIM D	DIM E
12/24	51.69	45.09	37.38	33.22	27.94
22/44	77.09	70.49	62.78	58.62	53.34
24/48	82.17	75.57	67.86	63.70	58.42
25/50	84.71	78.11	70.40	66.24	60.96
28/56	92.33	85.73	78.02	73.86	68.58
30/60	97.41	90.81	83.11	78.94	73.66
35/70	110.11	103.51	95.80	91.64	86.36
36/72	112.65	116.05	98.34	94.18	88.91
43/86	131.43	123.83	116.12	111.96	106.68
44/88	133.17	126.57	118.66	114.50	109.22
50/100	148.21	141.61	133.90	129.74	124.46

**All Connectors**

www.allconnectors.de  
Tel.: 0049 711 7009503  
70794 Filderstadt - Germany

info@allconnectors.de  
Fax: 0049 711 7009504  
Kettnerstr. 25

TAIL LENGTH	L	ROW TO ROW	S
A	3.50mm	A	5.08mm
B	6.00mm	B	3.81mm
C	10.80mm	C	3.00mm
		D	2.54mm

X± 1.10	X± 1.38	XX± 0.25	NAME INTENDED USE: EDGE CARD CONN.
X*	X*	XX*	PART NO. INTENDED USE: 2201 SERIES
UNITS: mm	DATE: 8/17/2014	APPD: Joseph Chou	TITLE: EDGE CONNECTOR 2.54mm PITCH WITH MID-HIGH MOUNTING EARS N/A TYPE
MATL: CONTACT: PHOSPHOR BRONZE HOUSING: P.B.T. UL94V-0	APPD: Ching-Yi Yu	DR: Zi.Hsiang.Chen	DWIND: 110-1010-522
			SCALE SHEET REV N/A 1/1 H